

CUCARD

Commitment for Healthcare

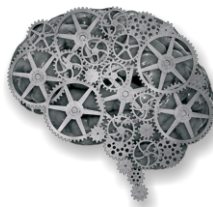
w.e.f. 01.09.2019

Product Name	Composition	Packing
Italtric-5	Escitalopram Oxalate 5 mg Tab.	10 x 10
Italtric-10	Escitalopram Oxalate 10 mg Tab.	10 x 10
Italtric-20	Escitalopram Oxalate 20 mg Tab.	10 x 10
Italtric-Plus	Escitalopram Oxalate 10 mg & Clonazepam 0.25 mg Tab.	10 x 10
Italtric-Forte	Escitalopram Oxalate 10 mg & Clonazepam 0.50 mg Tab.	10 x 10
Olpitric-5	Zolpidem Tartrate 5 mg Tab.	10 x 10
Olpitric-10	Zolpidem Tartrate 10 mg Tab.	10 x 10
Lopetric-0.5	Haloperidol Dispersible 0.5 mg Tab.	10 x 10
Lopetric-1.5	Haloperidol 1.5 mg Tab.	10 x 10
Lopetric-5	Haloperidol 5 mg Tab.	10 x 10
Lopetric-10	Haloperidol 10 mg Tab.	10 x 10
Anzatric-2.5	Olanzapine 2.5 mg Tab.	10 x 10
Anzatric-5	Olanzapine 5 mg Tab.	10 x 10
Anzatric-7.5	Olanzapine 7.5 mg Tab.	10 x 10
Anzatric-10	Olanzapine 10 mg Tab.	10 x 10
Anzatric-20	Olanzapine 20 mg Tab.	10 x 10
Anzatric-FL	Olanzapine 5 mg & Fluoxetine HCl 20 mg Tab.	10 x 10
Zoltric-25	Sertraline Hcl 25 mg Tab.	10 x 10
Zoltric-50	Sertraline Hcl 50 mg Tab.	10 x 10
Zoltric-100	Sertraline Hcl 100 mg Tab.	10 x 10
Alprotic-CR-200	Sodium Valproate & Valproic Acid (CR) 200 mg Tab.	10 x 10
Alprotic-CR-300	Sodium Valproate & Valproic Acid (CR) 300 mg Tab.	10 x 10
Alprotic-CR-500	Sodium Valproate & Valproic Acid (CR) 500 mg Tab.	10 x 10
Roetric-250	Divalproex Sodium Delayed Release 250 mg Tab.	10 x 10
Roetric-500	Divalproex Sodium Delayed Release 500 mg Tab.	10 x 10
Roetric-750	Divalproex Sodium (SR) 750 mg Tab.	10 x 10
Lamtric-1-SR	Alprazolam Sust. Rele. 1 mg Tab.	10 x 10
Triptric-5	Amitriptyline Hcl 5 mg Tab.	10 x 10
Triptric-10	Amitriptyline Hcl 10 mg Tab.	10 x 10
Triptric-25	Amitriptyline Hcl 25 mg Tab.	10 x 10
Diaztric-A-5	Amitriptyline 10 mg & Chlordiazepoxide 5 mg Tab.	10 x 10
Diaztric-A-10	Amitriptyline 25 mg & Chlordiazepoxide 10 mg Tab.	10 x 10
Cubaz-150 SR	Oxcarbazepine Sustain Release 150 mg Tab.	10 x 10

CUCARD
psycocare
(A division of cubit healthcare)

Neuro - Psychiatric division

Regd. Office: 9, CUBIT HOUSE, 13/369, Panchratna Estate, Changodar, Ahmedabad. (Guj.) INDIA.
Customer Care : +91 8000033222 (11.00 am to 7.00 pm) E-mail: cubit_healthcare@rediffmail.com

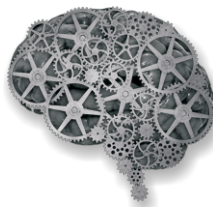


CUCARD

Commitment for Healthcare

w.e.f. 01.09.2019

Product Name	Composition	Packing
Cubaz-300 SR	Oxcarbazepine Sustain Release 300 mg Tab.	10 x 10
Zusul-25	Levosulpride 25 mg Tab.	10 x 10
CP-Tam-800	Piracetam 800 mg Tab.	10 x 10
Nortric-25	Nortriptyline Hcl 25 mg Tab.	10 x 10
Lobatric-5	Clobazam 5 mg Tab.	10 x 10
Lobatric-10	Clobazam 10 mg Tab.	10 x 10
Pratric-10	Citalopram 10 mg Tab.	10 x 10
Pratric-20	Citalopram 20 mg Tab.	10 x 10
Lozatric-25	Clozapine 25 mg Tab.	10 x 10
Lozatric-50	Clozapine 50 mg Tab.	10 x 10
Lozatric-100	Clozapine 100 mg Tab.	10 x 10
Othtric-25	Dothiepin Hcl 25 mg Tab.	10 x 10
Othtric-50	Dothiepin Hcl 50 mg Tab.	10 x 10
Othtric-75	Dothiepin Hcl 75 mg Tab.	10 x 10
Ulotric-20	Duloxetine Hcl 20 mg Cap. (Pellets Form)	10 x 10
Ulotric-20	Duloxetine Hcl 20 mg Tab.	10 x 10
Ulotric-30	Duloxetine Hcl 30 mg Tab.	10 x 10
Ulotric-40	Duloxetine Hcl 40 mg Tab.	10 x 10
Ulotric-60	Duloxetine Hcl 60 mg Tab.	10 x 10
Etotric-20	Fluoxetine Hcl 20 mg Cap.	10 x 10
Etotric-60	Fluoxetine Hcl 60 mg Cap.	10 x 10
Etotric-A	Fluoxetine Hcl 20 mg & Alprazolam 0.25 mg Tab.	10 x 10
Lunatric-5	Flunarizine Hcl 5 mg Tab.	10 x 10
Lunatric-10	Flunarizine Hcl 10 mg Tab.	10 x 10
Zepatric-0.25	Clonazepam Mouth Dissolving 0.25 mg Tab.	10 x 10
Zepatric-0.5	Clonazepam Mouth Dissolving 0.5 mg Tab.	10 x 10
Zepatric-1	Clonazepam Mouth Dissolving 1 mg Tab.	10 x 10
Zepatric-2	Clonazepam Mouth Dissolving 2 mg Tab.	10 x 10
Zepatric-P	Clonazepam 0.5 mg + Paroxetine Hcl 25 mg. Tab.	2 x 5 x 10
Eritric-1	Risperidone 1 mg Tab.	10 x 10
Eritric-2	Risperidone 2 mg Tab.	10 x 10
Eritric-3	Risperidone 3 mg Tab.	10 x 10
Eritric-4	Risperidone 4 mg Tab.	10 x 10
Eritric-1 T	Risperidone 1 mg & Trihexyphenidyl Hcl 2 mg Tab.	10 x 10
Eritric-2 T	Risperidone 2 mg & Trihexyphenidyl Hcl 2 mg Tab.	10 x 10



CUCARD

Commitment for Healthcare

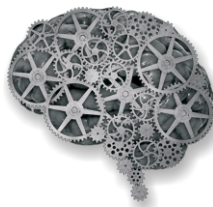
w.e.f. 01.09.2019

Product Name	Composition	Packing
Eritric-3 T	Risperidone 3 mg & Trihexyphenidyl Hcl 2 mg Tab.	10 x 10
Eritric-4 T	Risperidone 4 mg & Trihexyphenidyl Hcl 2 mg Tab.	10 x 10
Proptric-D	Propranolol Hcl 20 mg & Diazepam 2.5 mg Tab.	10 x 10
Proptric-A	Propranolol Hcl 20 mg & Alprazolam 0.25 mg Tab.	10 x 10
Proptric-F	Flunarizine DiHCl 10 mg & Propranolol Hcl 20 mg Tab.	10 X 10
Proptric-40 SR	Propranolol Hcl 40 mg Sustain Release Cap.	10 x 10
Proptric-40 SR	Propranolol Hcl 40 mg Sustain Release Tab.	10 x 10
Cucida	Flupentixol Di-Hcl 0.5 mg & Escitalopram 10 mg Tab.	10 x 10
Oratric-1	Lorazepam 1 mg Tab.	10 x 10
Oratric-2	Lorazepam 2 mg Tab.	10 x 10
Cudyl-2	Trihexyphenidyl Hcl 2 mg Tab.	10 x 10
Cudyl-5	Trihexyphenidyl Hcl 5 mg Tab.	10 x 10
Cudyl-T	Trihexyphenidyl Hcl 5 mg & Trifluoperazine Hcl 2 mg Tab.	10 x 10
Cutoin-100	Phenytoin Sodium 100 mg Tab.	10 x 10
Cutoin-200	Phenytoin Sodium 200 mg Tab.	10 x 10
Cugine-50	Lamotrigine Dispersible 50 mg Tab.	10 x 10
Cugine-100	Lamotrigine Dispersible 100 mg Tab.	10 x 10
Psypine-25	Quetiapine Fumarate 25 mg Tab.	10 x 10
Psypine-100	Quetiapine Fumarate 100 mg Tab.	10 x 10
Psypine-200	Quetiapine Fumarate 200 mg Tab.	10 x 10
Cuprega-75 SR	Pregabalin 75 mg Sustain Release Tab.	10 x 10
Cuprega-M	Pregabalin 70 mg & Methylcobalamin 750 mcg Cap.	10 x 10
Cuprega-N	Pregabalin 75 mg & Nortriptyline Hcl 10 mg Tab.	10 X 10
Cobard-AL	Methylcobalamine 1500 mcg, Alpha Lipoic Acid 100 mg, Pyridoxine Hcl 3 mg & Folic Acid 1.5 mg Tab.	10 x 10
Cobard-50	Pregabalin 50 mg Tab.	10 x 10
Nuthyl-100	Gabapentin 100 mg Tabs	10 x 10
Cugaba-300	Gabapentin 300 mg Cap.	10 x 10
Cugaba-400	Gabapentin 400 mg Cap.	10 x 10
Nuthyl-450 SR	Gabapentine 450 mg (SR) Tabs	10 x 10
Cugaba-M	Gabapentin 300 mg & Methylcobalamin 500 mcg Cap.	10 x 10
Cugaba-AT	Gabapentin 300 mg (SR) & Amitriptyline HCl 10 mg Tab.	10 x 10
Cugaba-N100	Gabapentin 100 mg & Nortriptyline 10 mg Tab.	10 x 10
Citcard-500	Citicoline 500 mg Tab.	1 x 10
Citcard-P	Citicoline 500 mg & Piracetam 800 mg Tab.	10 x 10
Amiard-50	Amisulpride 50 mg Tab.	10 x 10
Amiard-100	Amisulpride 100 mg Tab.	10 x 10

CUCARD
psycocare
(A division of cubit healthcare)

Neuro - Psychiatric division

Regd. Office: 9, CUBIT HOUSE, 13/369, Panchratna Estate, Changodar, Ahmedabad. (Guj.) INDIA.
Customer Care : +91 8000033222 (11.00 am to 7.00 pm) E-mail: cubit_healthcare@rediffmail.com



CUCARD

Commitment for Healthcare

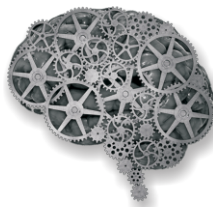
w.e.f. 01.09.2019

Product Name	Composition	Packing
Amiard-200	Amisulpride 200 mg Tab.	10 x 10
Foxard-37.50 ER	Venlafaxine 37.50 mg Enteric Release Tab.	10 x 10
Foxard-75 ER	Venlafaxine 75 mg Enteric Release Tab.	10 x 10
Cutric	Chlorodiazepoxide 10 mg & Trifluoperazine Hcl 1 mg Tab.	2 x 5 x 10
Govert-8	Betahistine Hcl 8 mg Tab.	10 x 10
Govert-16	Betahistine Hcl 16 mg Tab.	10 x 10
Govert-24	Betahistine Hcl 24 mg Tab.	10 x 10
Cunerv-Forte Soft Gel	Methylcobalamin, ALA, Benfotiamine, Inositol & Chromium Polynicotinate with Pyridoxine Hcl Soft Gel	10 x 10
Methicu Symp	Vitamins with Methylcobalamin, Lysine & D-Panthenol Symp.	100 ml.
Ltem-250	Levetiracetam 250 mg Tab.	10 x 10
Ltem-500	Levetiracetam 500 mg Tab.	10 x 10
Pagmet-OD 75	Pregabalin 75 mg SR & Methylcobalamin 1500 mcg Tab.	10 x 10
Pagmet-OD 150	Pregabalin 150 mg SR & Methylcobalamin 1500 mcg Tab.	10 x 10
Culactone	Fruzemide 20 mg & Spironolactone 50 mg Tab.	10 x 10
Cupira-25	Topiramate 25 mg Tab.	10 x 10
Cupira-50	Topiramate 50 mg Tab.	10 x 10
Zutiz-0.50	Etizolam 0.50 mg Tabs	10 X 10
Paroin-25	Paroxetine-25 mg	10 X 10
Cthium-300	Lithium Carbonate 300 mg Tab.	10 X 10
Cthium-450 PR	Lithium Carbonate 450 mg (PR) Tab.	10 X 10
Flucida	Flupentixol 0.5 mg Tab.	10 X 10
Cuzapine-7.5	Mirtazapine 7.5 mg Tab.	10 X 10
Cuzapine-15	Mirtazapine 15 mg Tab.	10 X 10
Zepam-2	Diazepam 2 mg Tab.	10 X 10
Zepam-5	Diazepam 5 mg Tab.	10 X 10
Zepam-10	Diazepam 10 mg Tab.	10 X 10
Cupenta-DSR (Alu-Alu)	Pantoprazole 40 mg & Domperidone 30 mg SR Cap.	10 x 10
Curabe-DSR (Alu-Alu)	Rabeprazole 20 mg & Domperidone 30 mg SR Cap.	10 x 10
Curabe-LSR (Alu-Alu)	Rabeprazole 20 mg & Levosulpiride 75 mg SR Cap.	10 x 10
Dizcard-25	Cinnarizine 25 mg Tab.	2 x 5 x 10
Dizcard-50	Cinnarizine 50 mg Tab.	2 x 5 x 10
Dizcard-75	Cinnarizine 75 mg Tab.	2 x 5 x 10
Dizcard-DM	Cinnarizine 20 mg + Domperidone 15 mg Tab.	10 x 10
Laconerv-50	Lacosamide 50 mg Tab.	10 x 10
Laconerv-100	Lacosamide 100 mg Tab.	10 x 10

CUCARD
psycocare
(A division of cubit healthcare)

Neuro - Psychiatric division

Regd. Office: 9, CUBIT HOUSE, 13/369, Panchratna Estate, Changodar, Ahmedabad. (Guj.) INDIA.
Customer Care : +91 8000033222 (11.00 am to 7.00 pm) E-mail: cubit_healthcare@rediffmail.com



CUCARD

Commitment for Healthcare

w.e.f. 01.09.2019

Product Name		Composition	Packing
Grast-4G	Soft Gel	Soft gelatin capsule of Omega-3 Fatty Acid, Ginseng, Green Tea Extract, Ginkgo Biloba, Grape Seed Extract & Vitamins, Minerals & Trace Elements	3 x 10
Cucid Gel		Aluminium 168.75 mg, Magnesium 250 mg & Simethicone 25 mg Gel (Mango Flavour)	170 ml.
Ambrox Plus		Ambroxol 15 mg, Guaiphenesin 100 mg, Salbutamol 1 mg & Menthol 1 mg / 5 ml	100 ml.
Dextro Tuss		Dextromethorphan 10 mg, Phenylephrine 5 mg, Cetirizine Di-Hcl 5 mg & Guaiphenesin 100 mg / 5 ml	60 ml.
Egain-369		Omega 3, Omega 6, Omega 9 Hard Gelatin Cap.	10 x 10
Injectables			
Lopetric-LA	Dispo Pack	Haloperidol Decanoate 50mg/ml Inj	1 Amp.
Zusul Inj.		Levosulpiride 25mg/2ml Inj	1 Amp.
Citcard Inj.		Citicholine 2 ml.	1 Amp.
Zepam Inj.		Diazepam 10 mg/2 ml	1 Amp.
Oratric Inj.		Lorazepam	1 Amp.
Flucida inj.		Flupentaxol 20 mg	1 Amp.
Cutoin Inj.		Phynitoin	1 Amp.
Cotsul Inj.		Levosulpride	1 Amp.
Alprotic Inj.		Sodium Valporate	1 Amp.

Terms & Conditions:

G.S.T. Will be charged extra
* Expiry & Breakage will not be entertained
Delivery F.O.R. at our godown only,

All are requested to place order in multiple in 1c/s in liquid products
Goods once sold will not be taken back

You will get Dr. gifts @ 1% of your invoice amount in each & every invoice

CUCARD
psycocare
(A division of cubit healthcare)

Neuro - Psychiatric division

Regd. Office: 9, CUBIT HOUSE, 13/369, Panchratna Estate, Changodar, Ahmedabad. (Guj.) INDIA.
Customer Care : +91 8000033222 (11.00 am to 7.00 pm) E-mail: cubit_healthcare@rediffmail.com